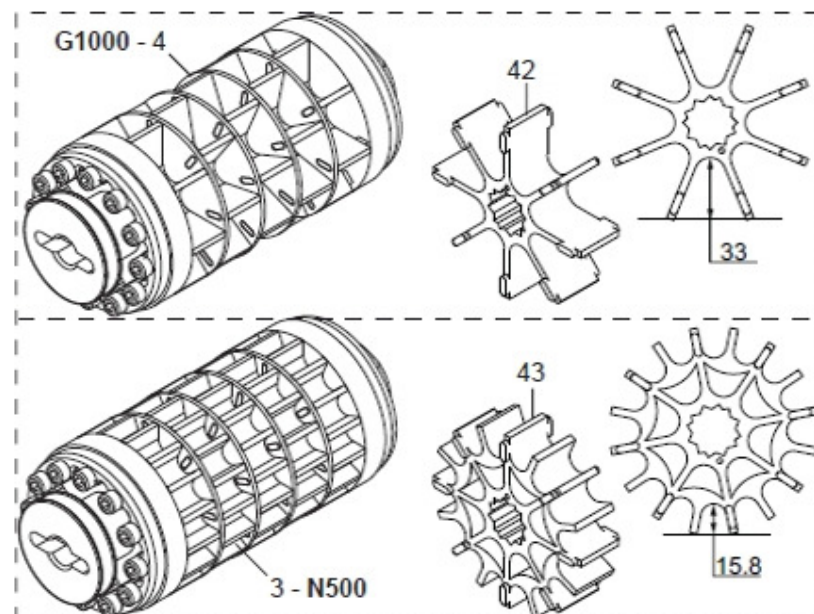
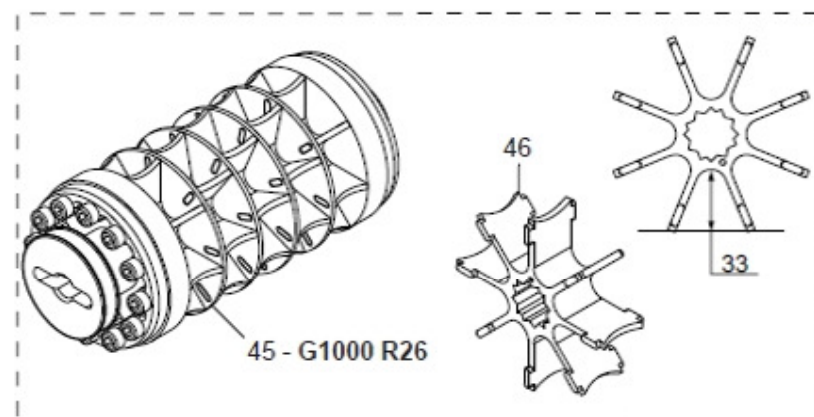
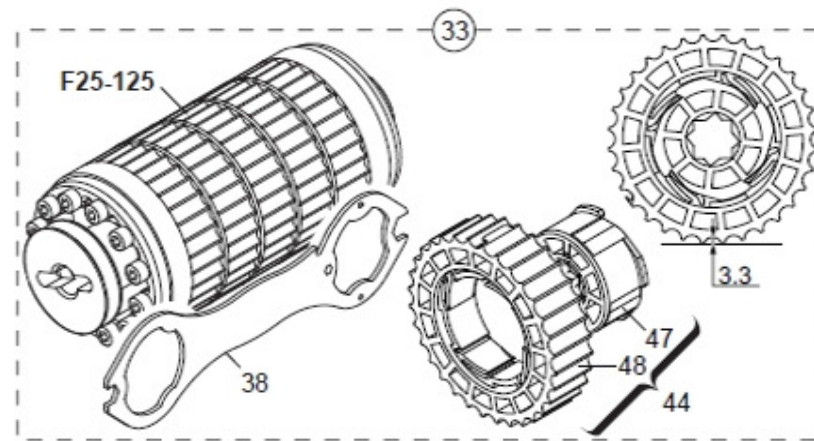
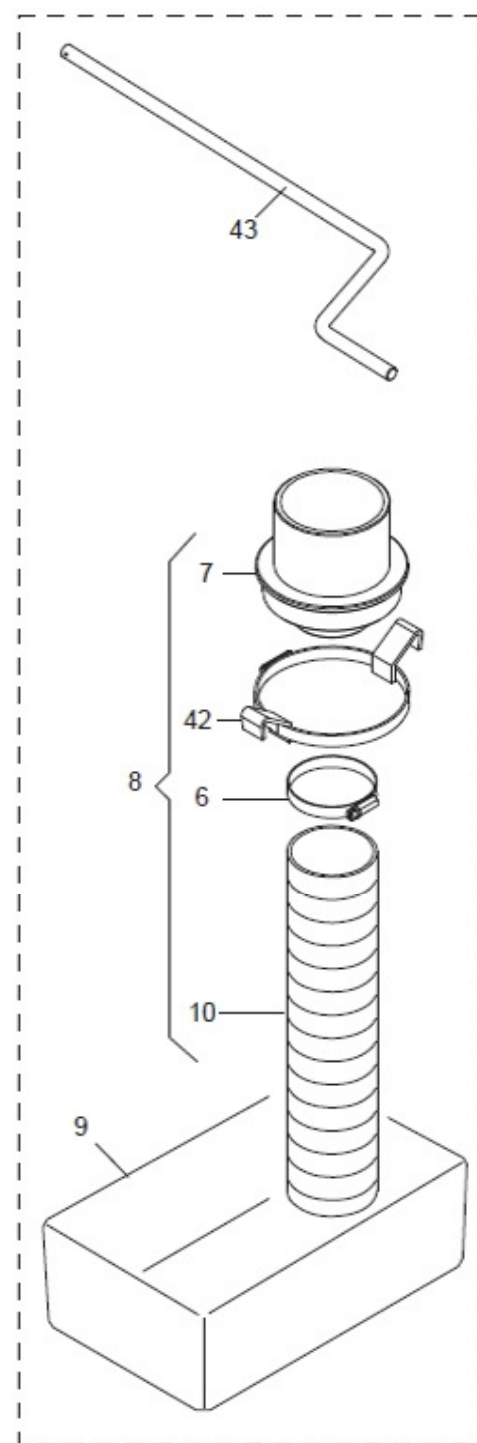
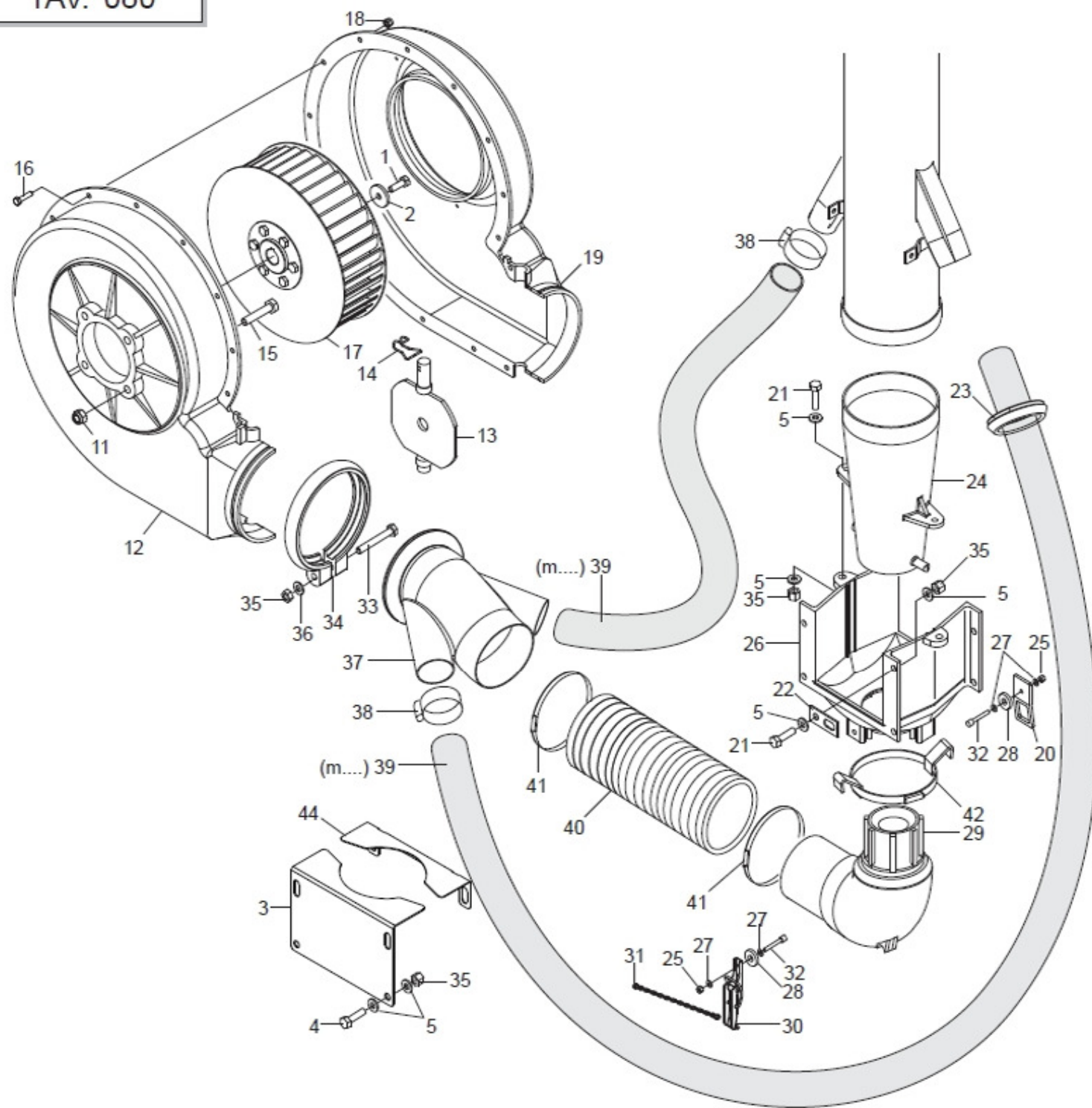
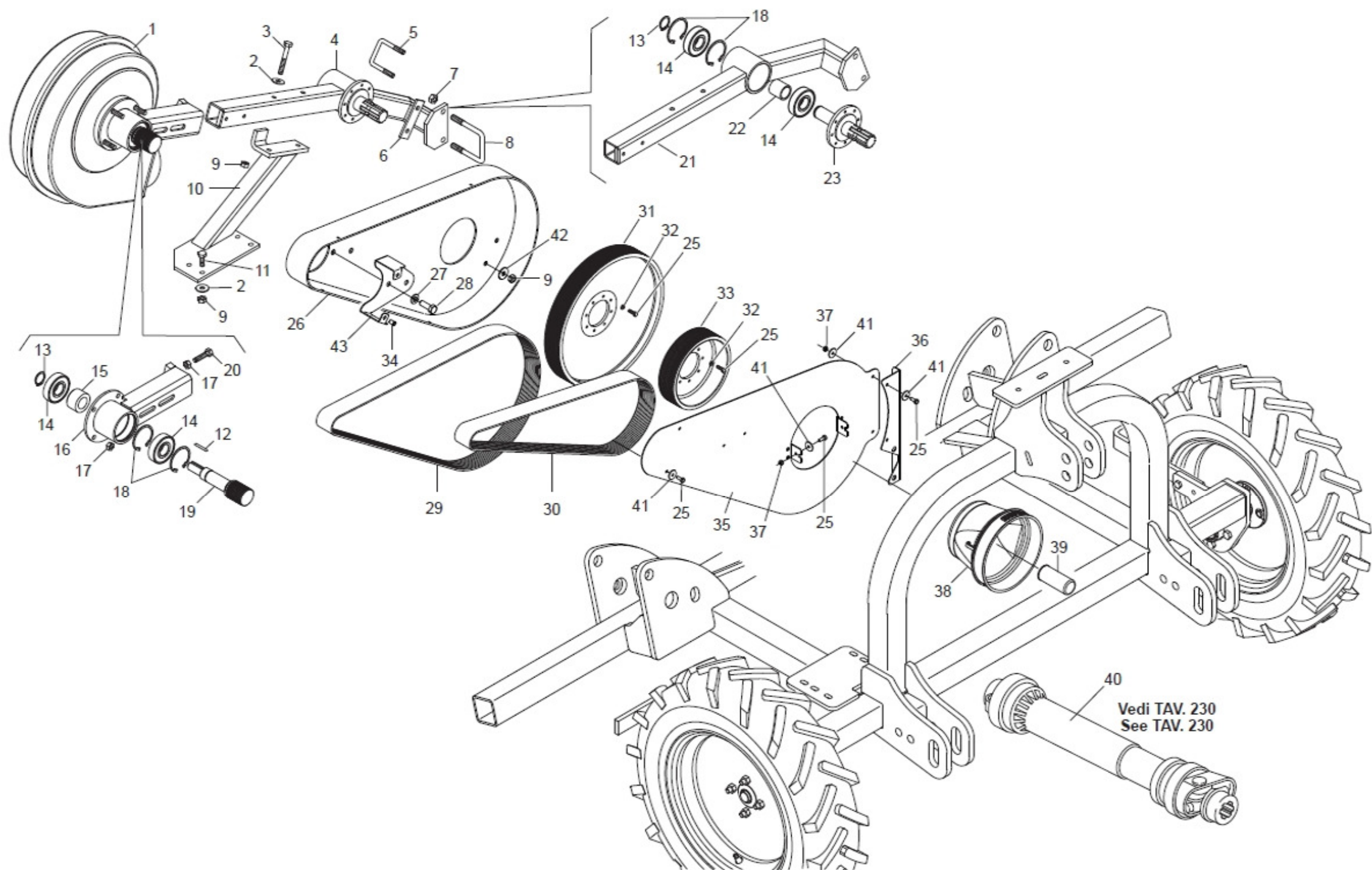


Semente Normale - Normal Seeds

Semente Grossa (Piselli - Ceci - etc.)
Large Seeds (Peas - Pulses - etc.)Semente Piccola
Small Seeds



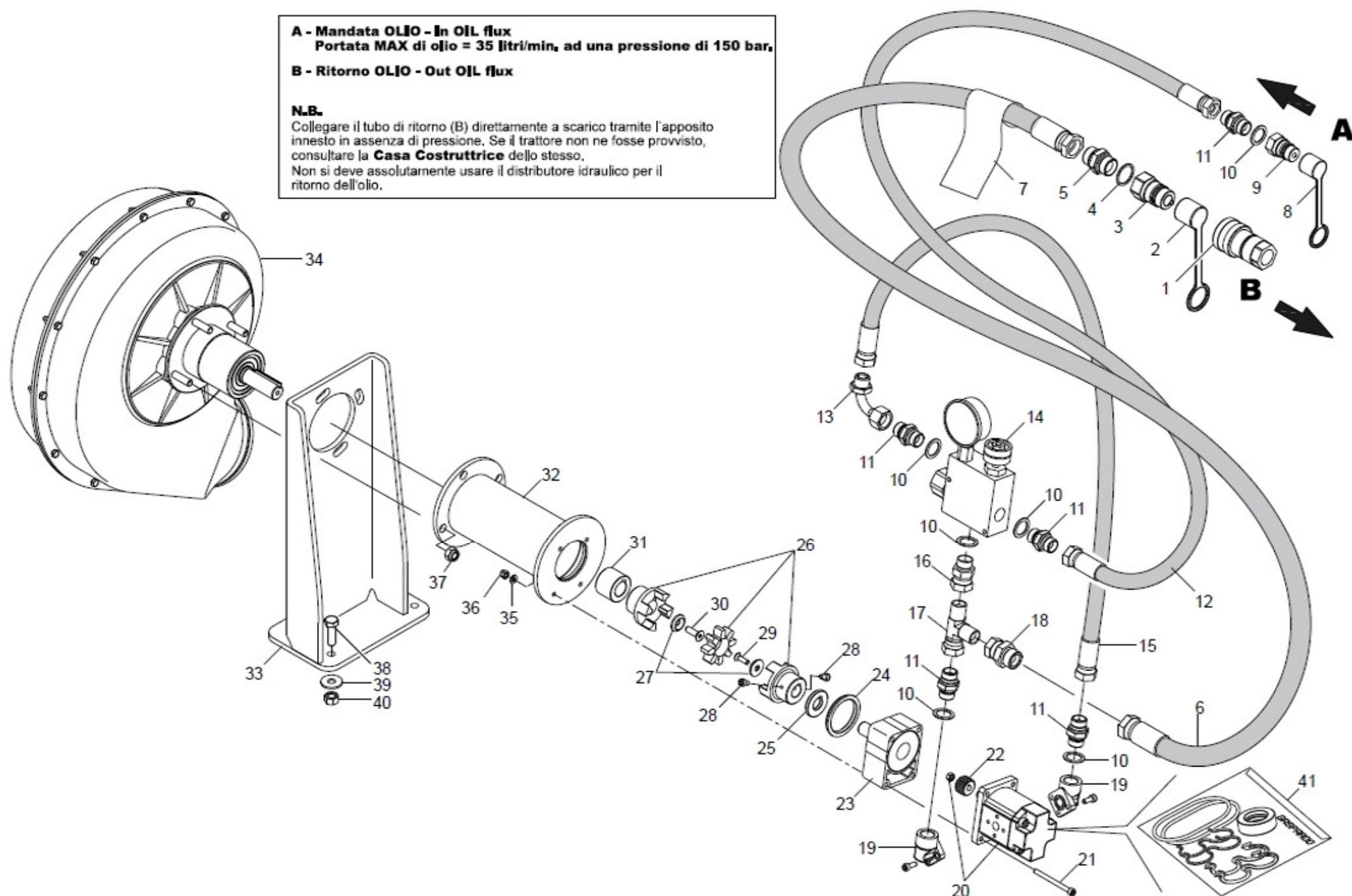


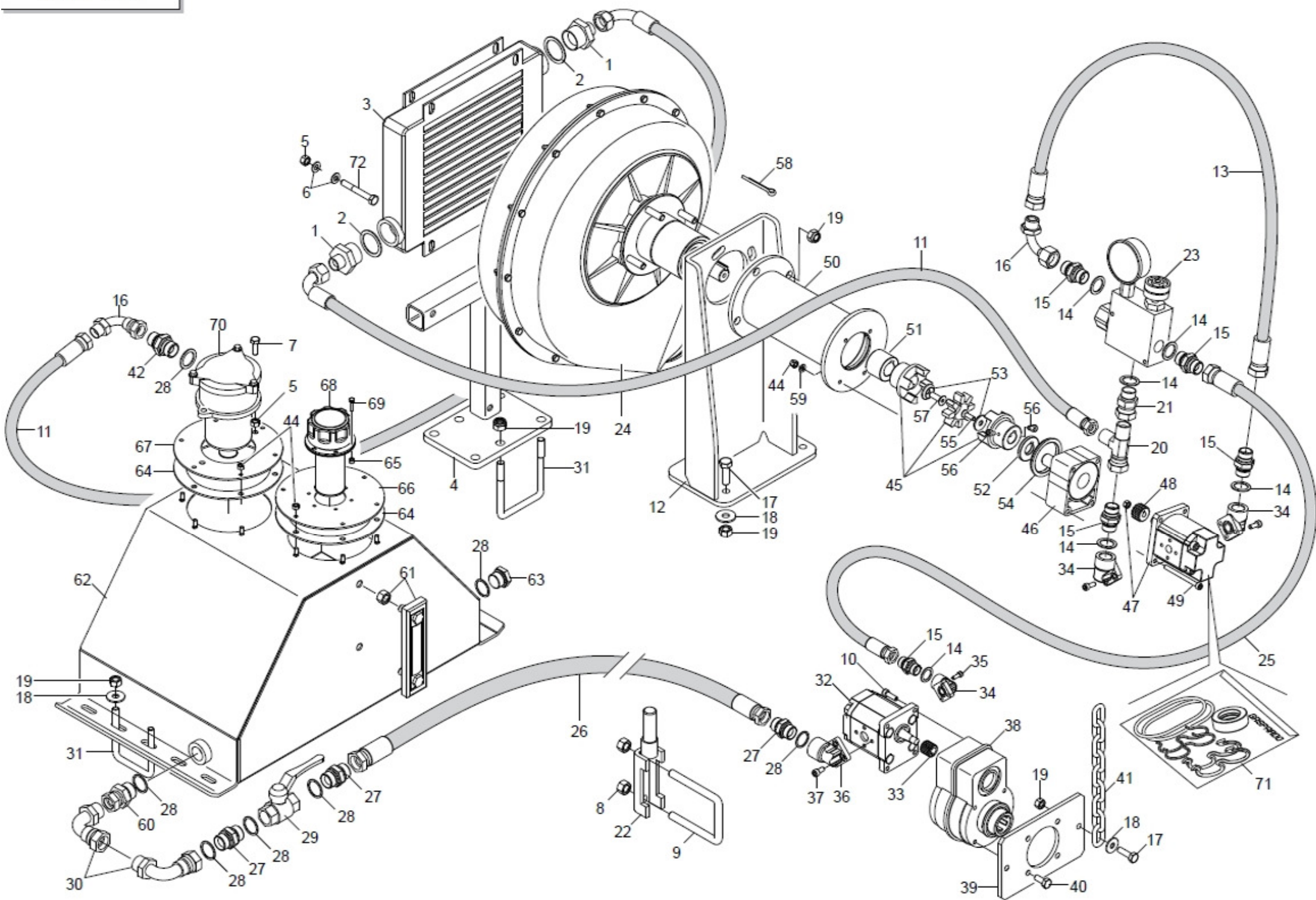


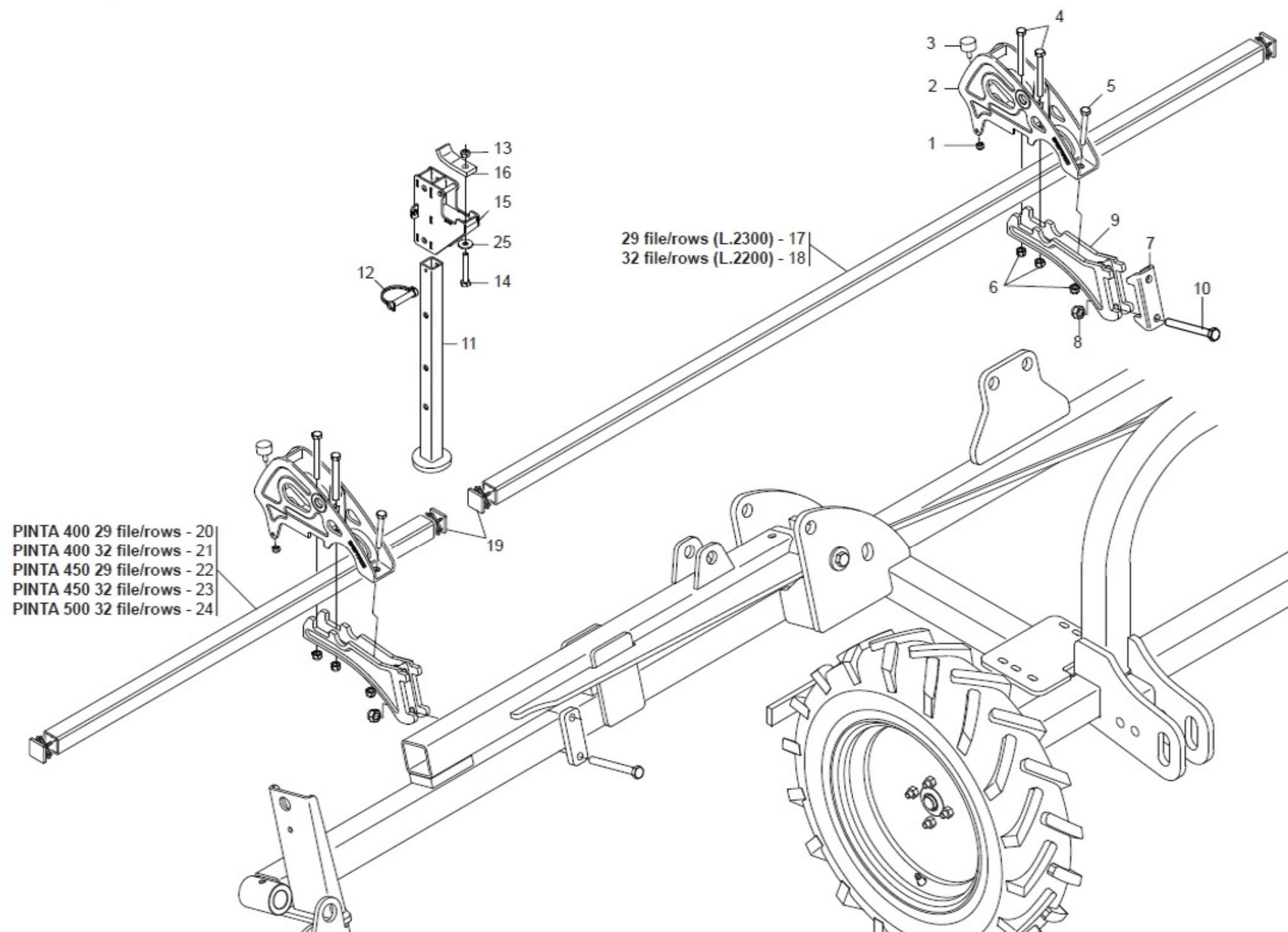
A - Mandata OLIO - In OIL flux
Portata MAX di olio = 35 litri/min, ad una pressione di 150 bar.
B - Ritorno OLIO - Out OIL flux

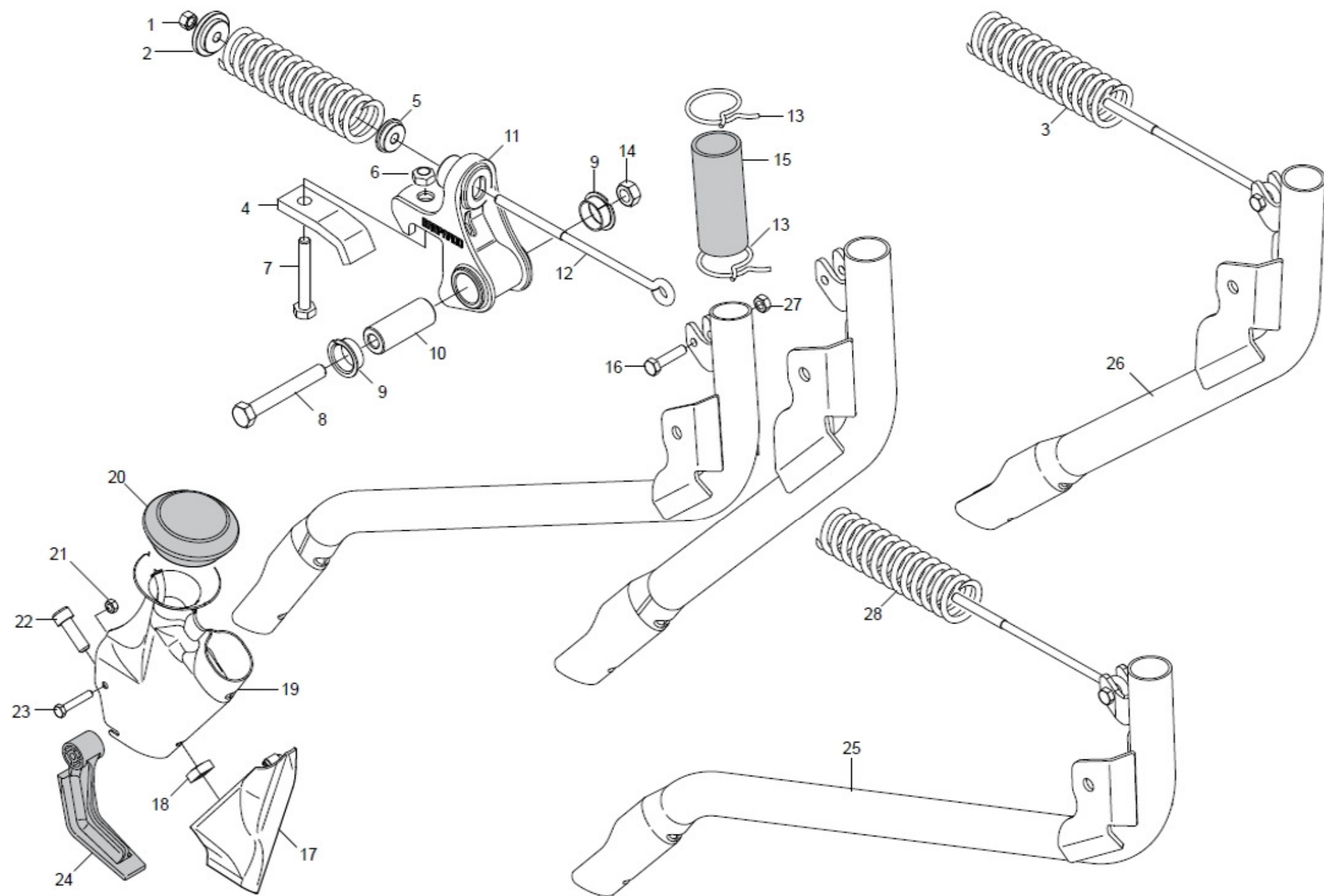
N.B.

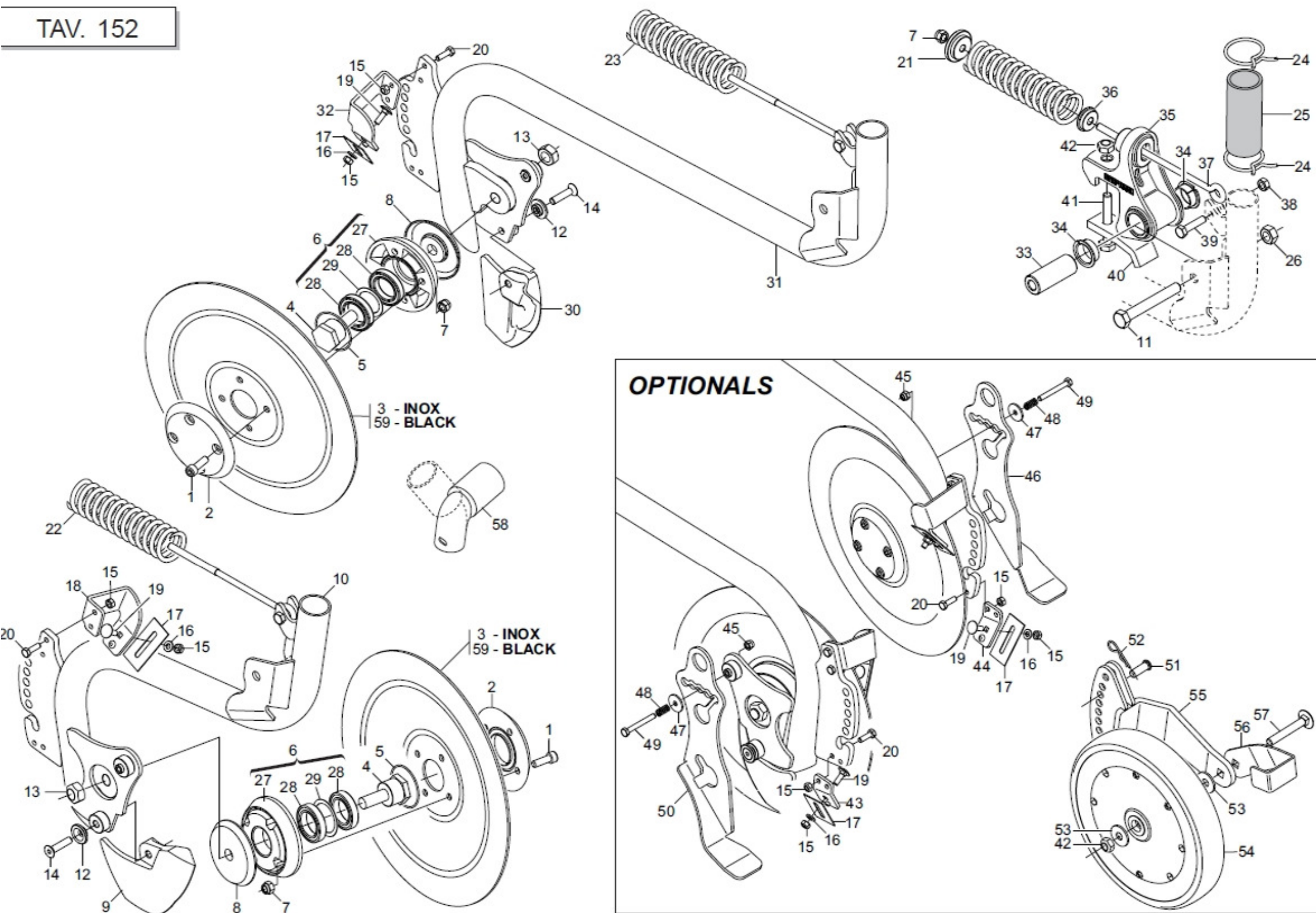
Collegare il tubo di ritorno (B) direttamente a scarico tramite l'apposito innesto in assenza di pressione. Se il trattore non ne fosse provvisto, consultare la **Casa Costruttrice** dello stesso.
 Non si deve assolutamente usare il distributore idraulico per il ritorno dell'olio.

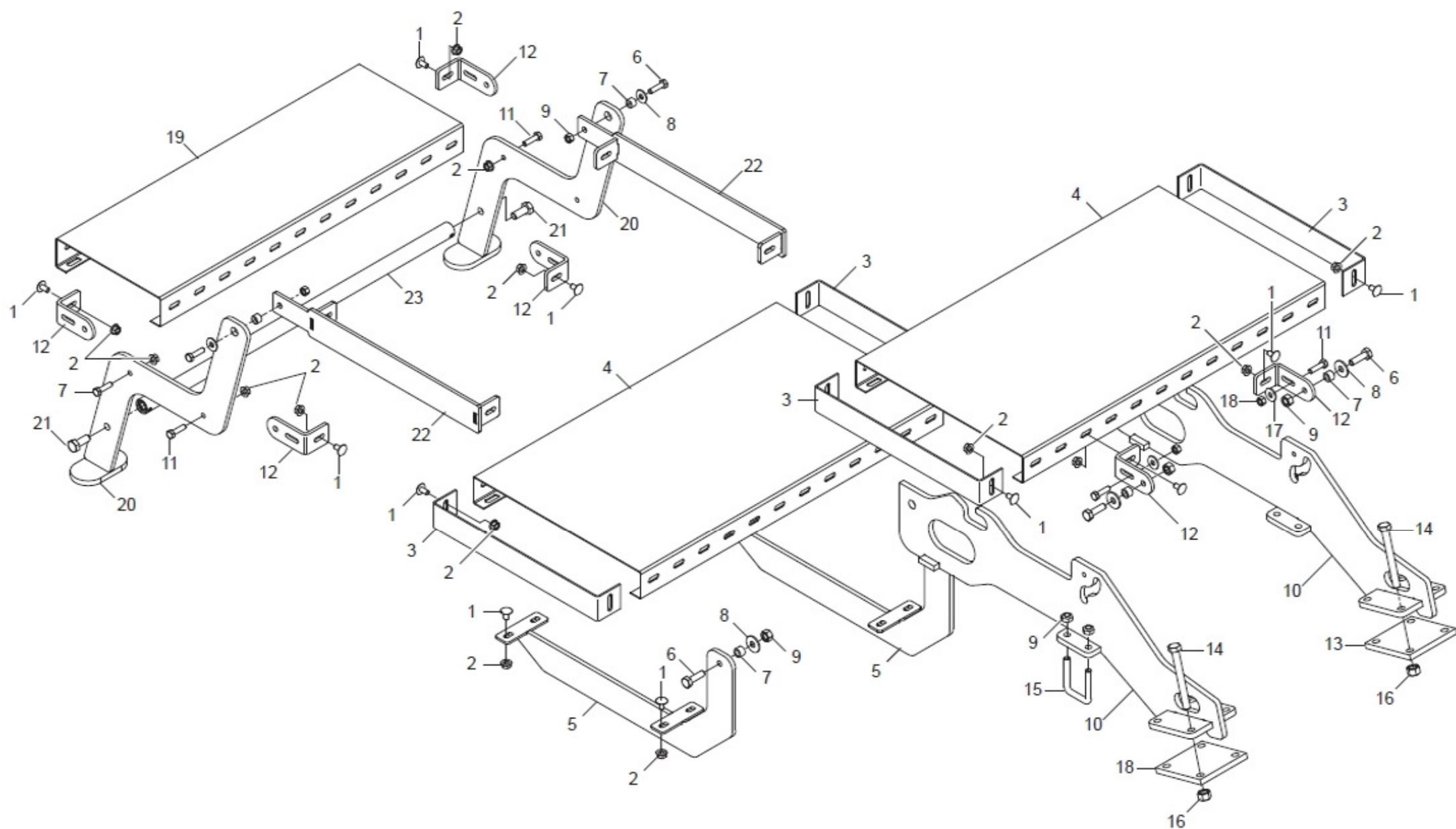


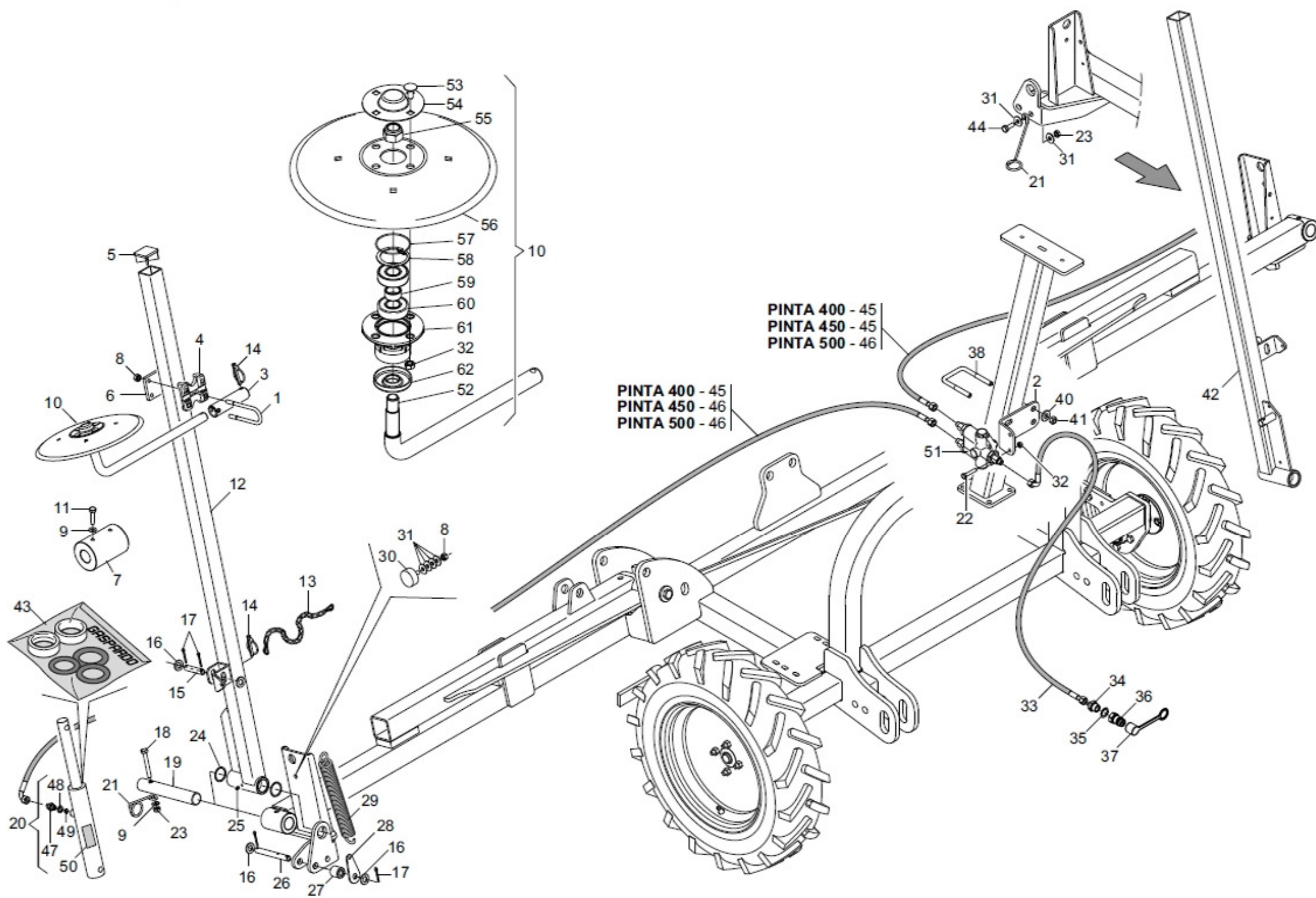


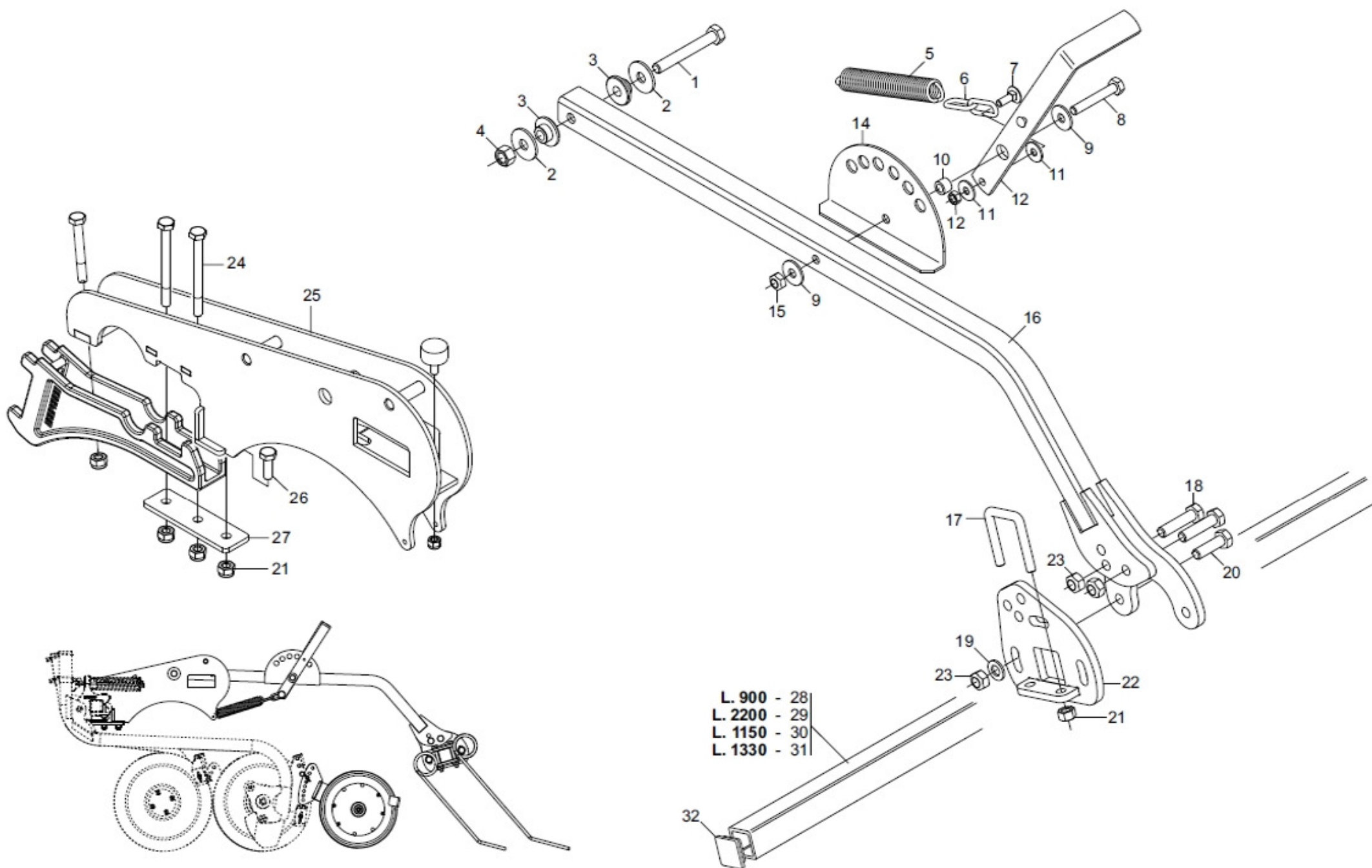


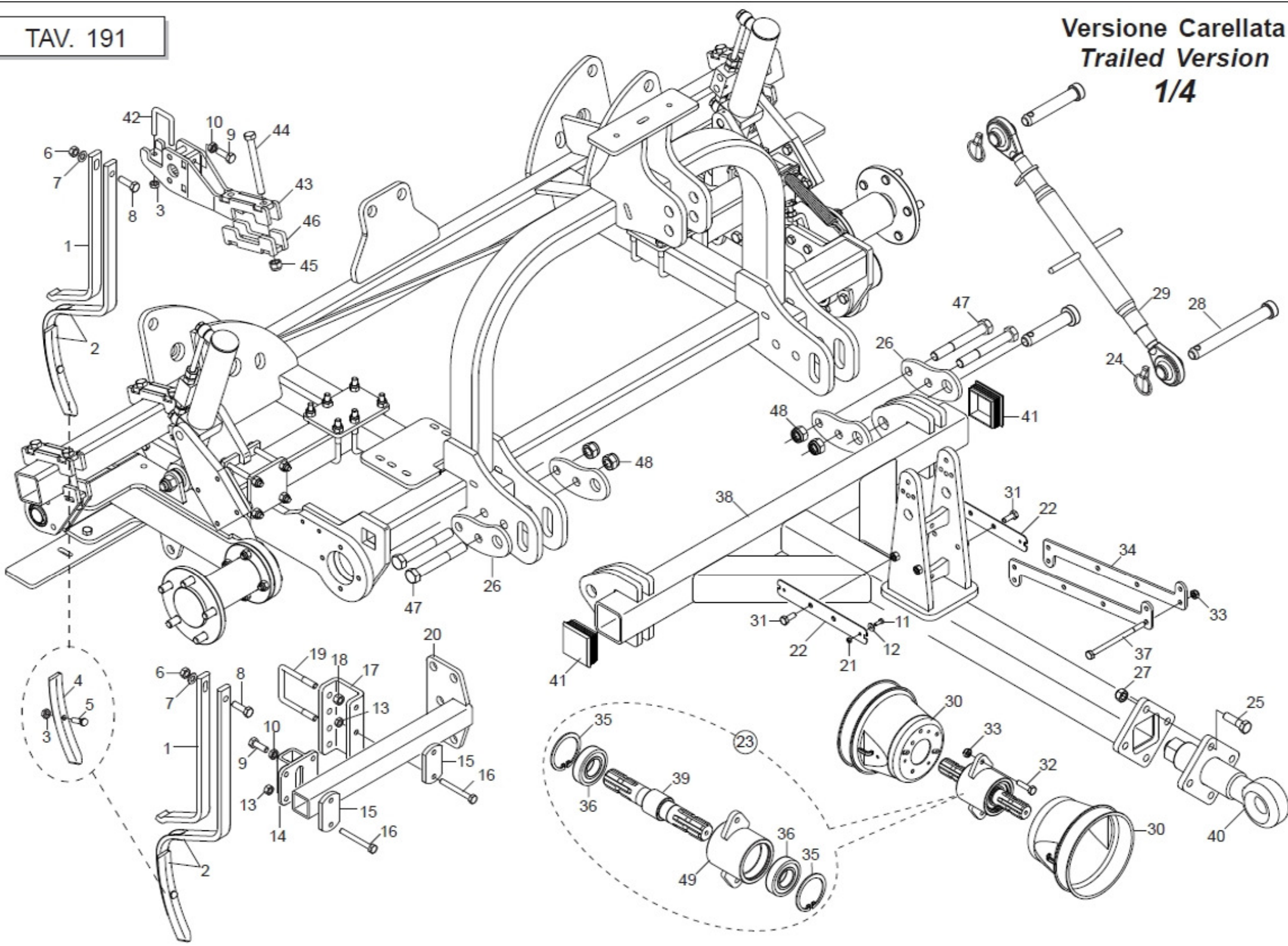


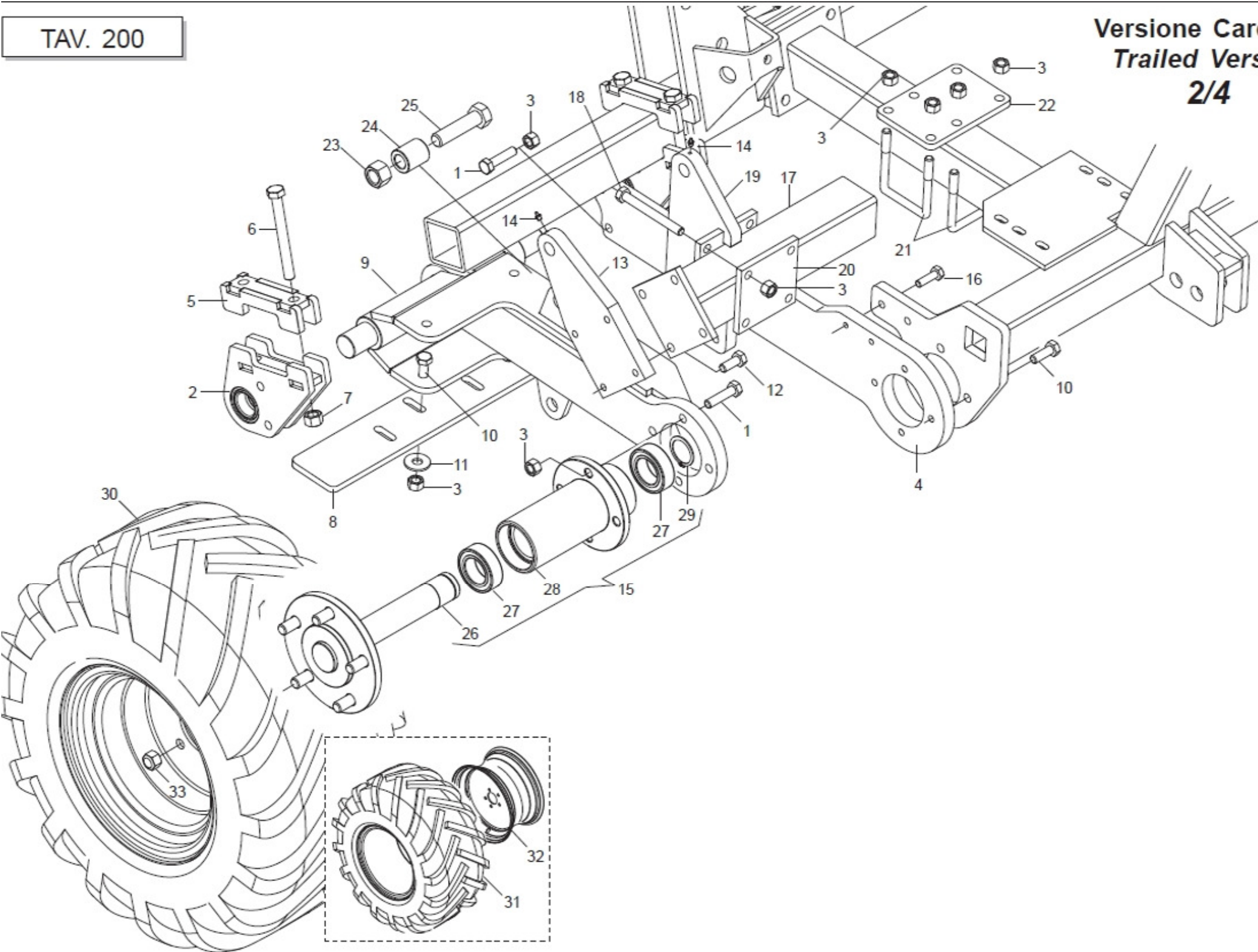


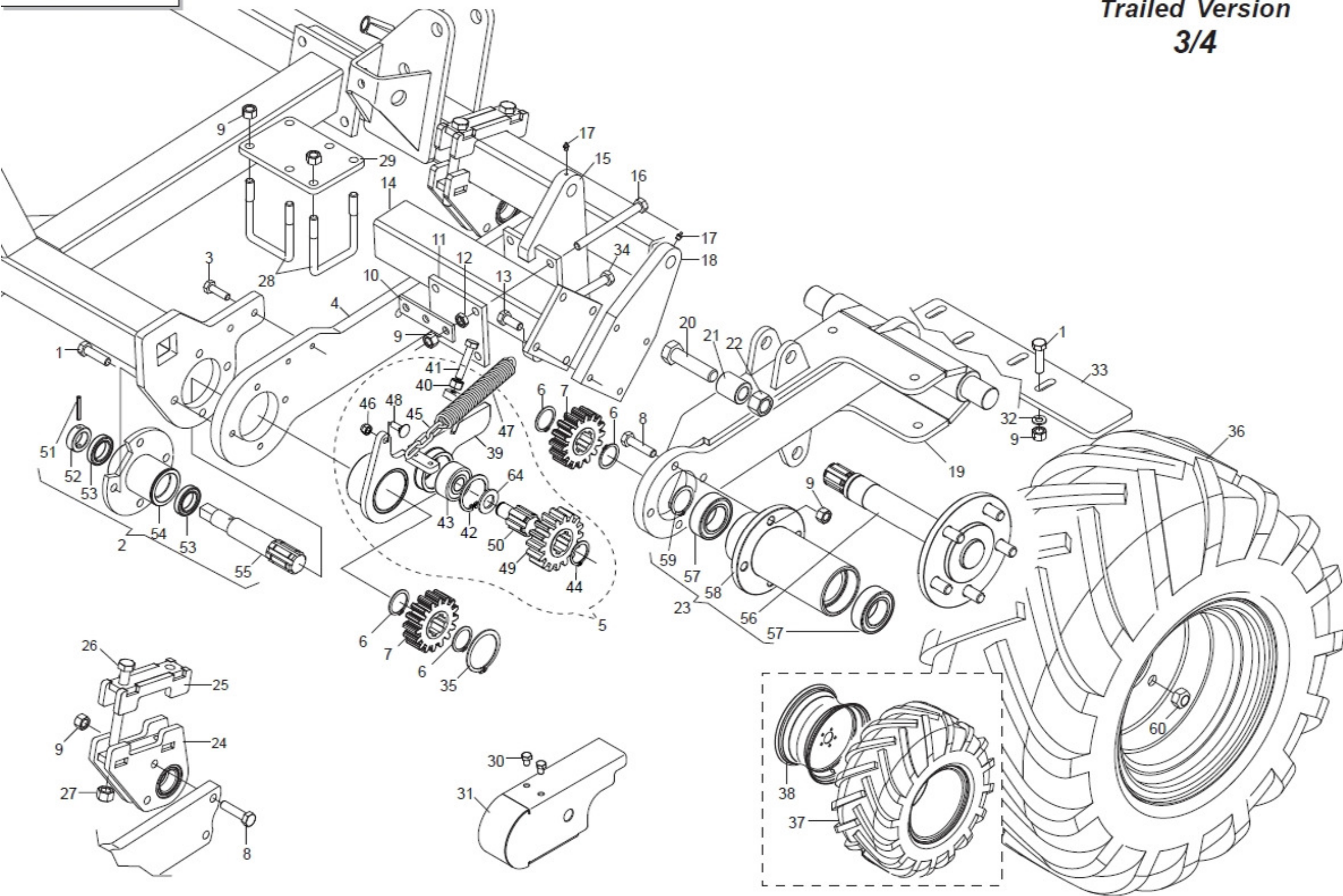


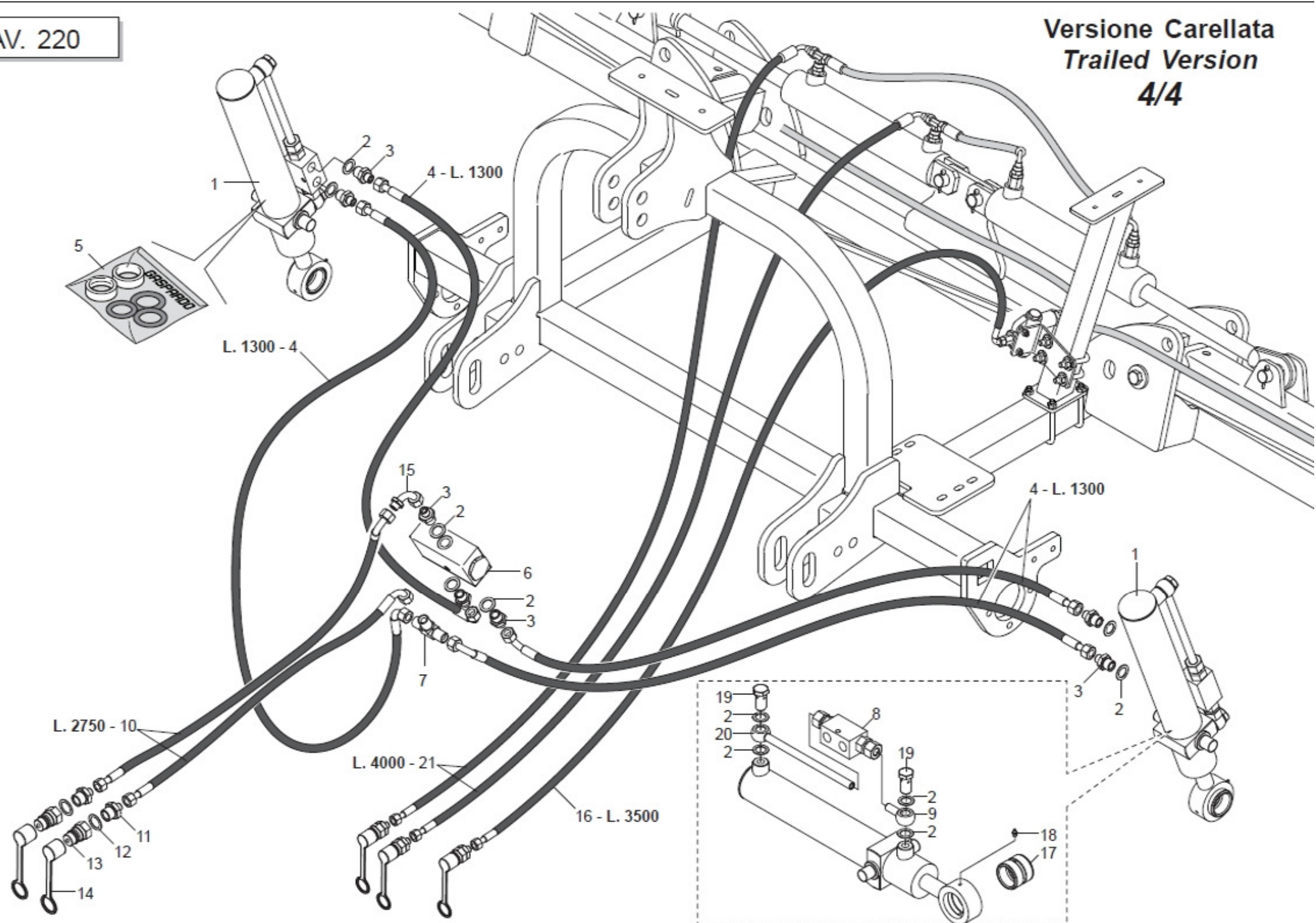


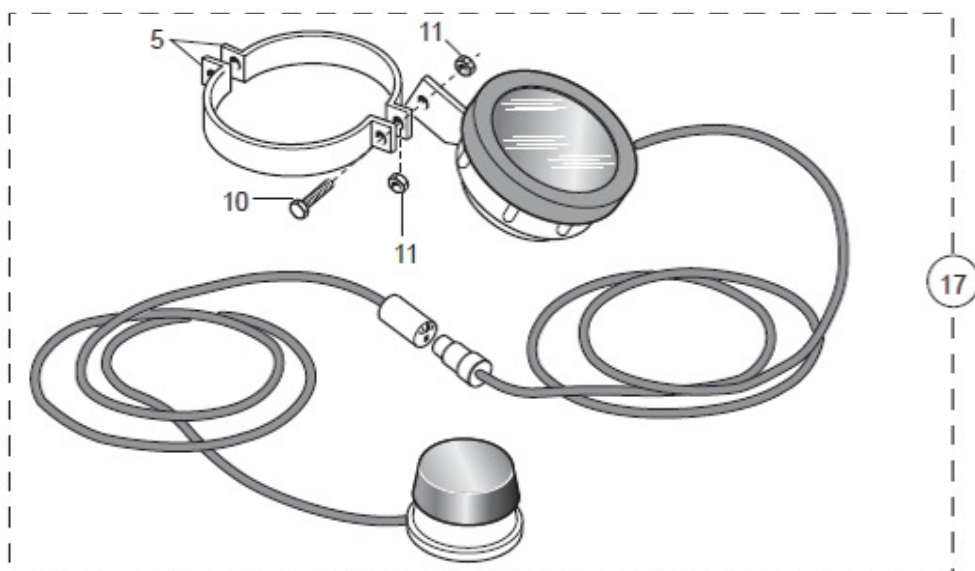
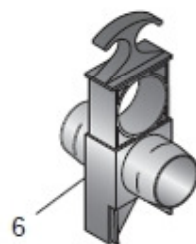
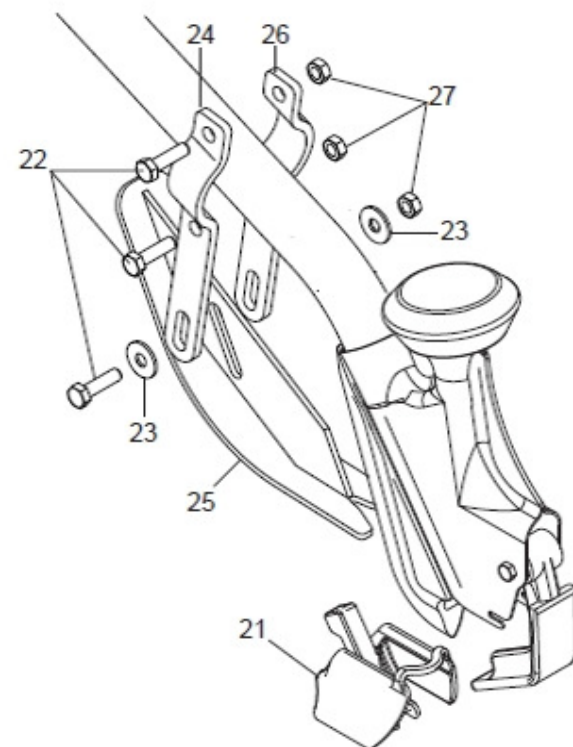
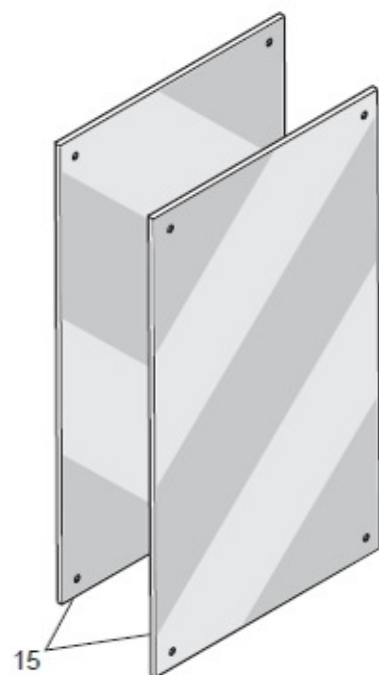
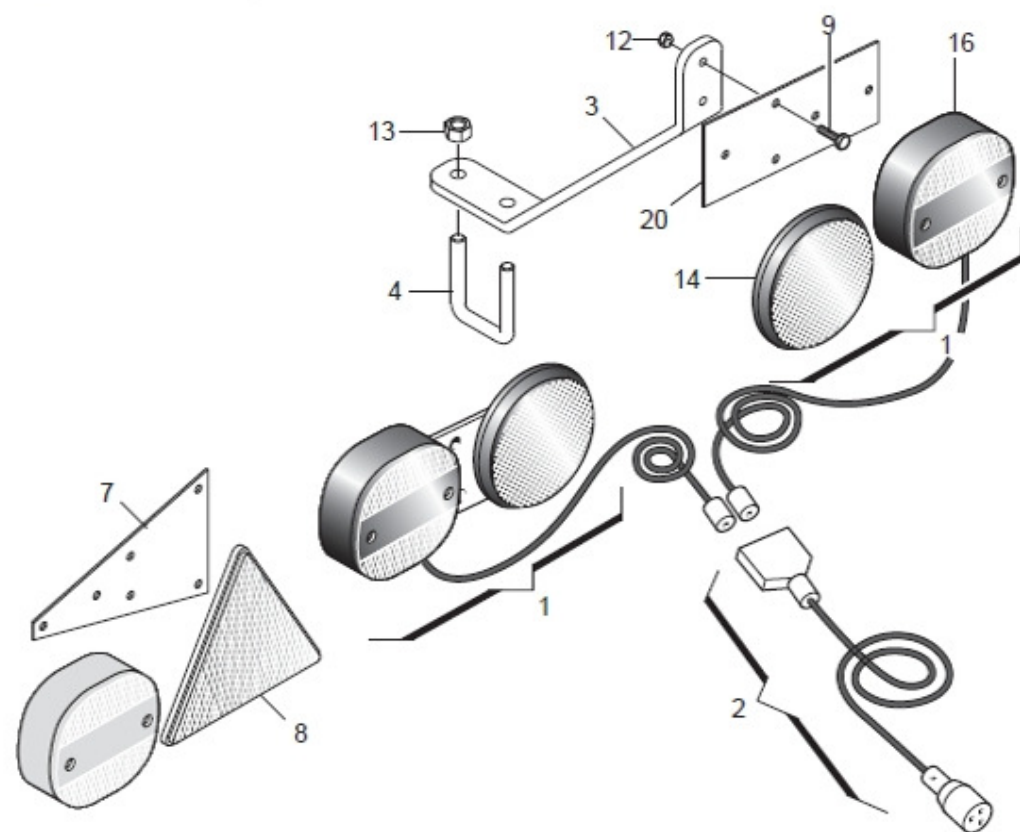




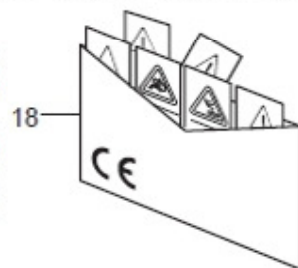








DECALCOMANIE
AVVERTIMENTO
DECAL
DBZIEHBILD
DECALCOMANIE
CALCOMANIE



DECALCOMANIE
AVVERTIMENTO
DECAL
DBZIEHBILD
DECALCOMANIE
CALCOMANIE

PINTA

GASPARDO